



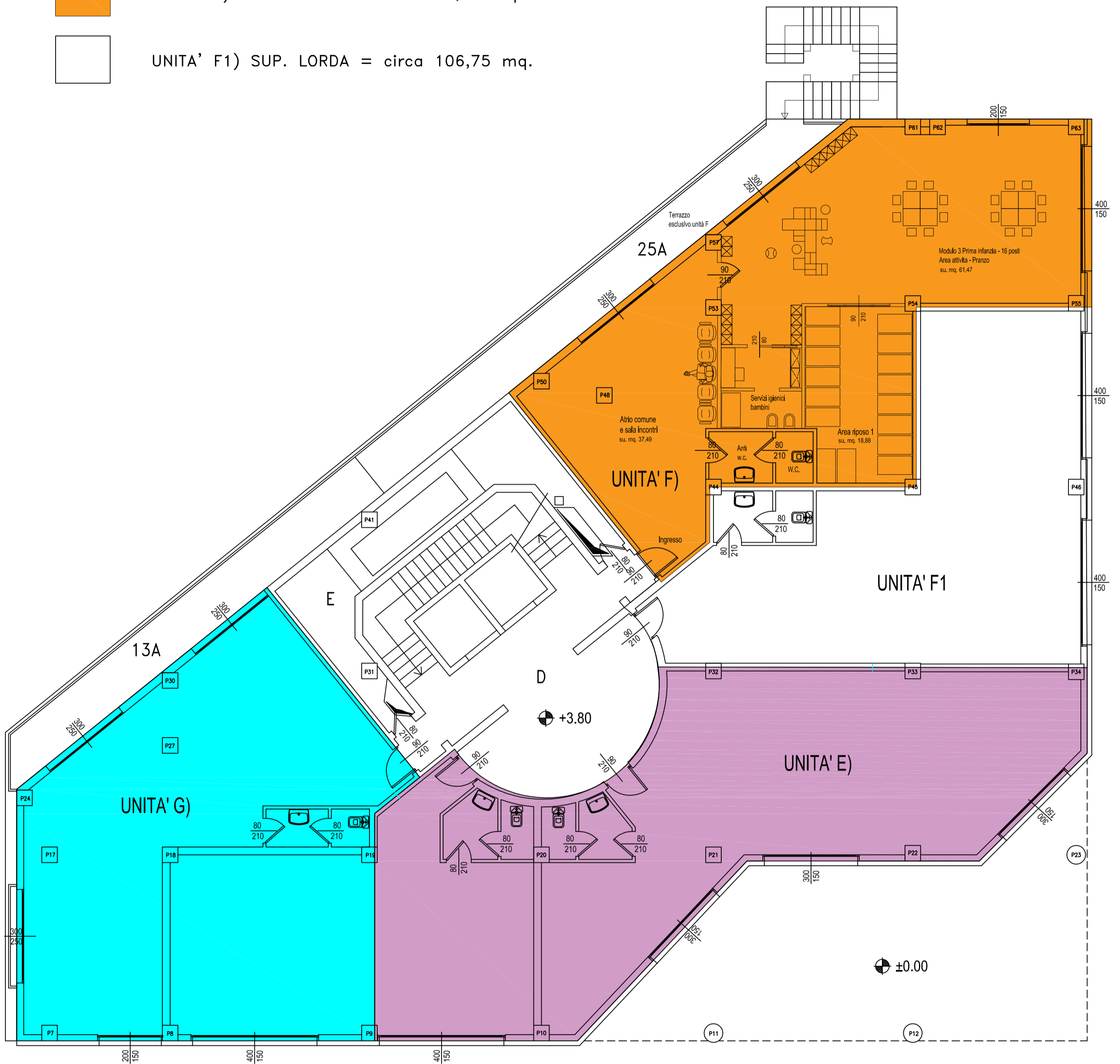


## IPOTESI DI DISTRIBUZIONE INTERNA DEGLI SPAZI

-  UNITA' G) SUP. LORDA = circa 136,03
-  UNITA' E) SUP. LORDA = circa 156,86 mq.
-  UNITA' F) SUP. LORDA = circa 144,67 mq.
-  UNITA' F1) SUP. LORDA = circa 106,75 mq.



# Planimetria piano primo

scala 1:100 - formato A2

adb

architecture, design & branding  
ARCH. CARLO SCHIRA